

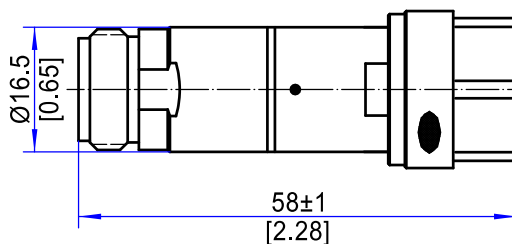
FSFA5-18-XX-N

Fixed Attenuator, DC~18GHz, 5W, N

Electrical Specifications					
1	Nominal Impedance	50 Ω			
2	Average Power ¹	5W @ 25°C			
3	Frequency Range	DC~4GHz	DC~8GHz	DC~12.4GHz	DC~18GHz
4	VSWR	≤ 1.15	≤ 1.20	≤ 1.30	≤ 1.35
Environmental Specifications					
1	Operating Temperature	-55°C~+125°C			
Mechanical Specifications					
1	Connectors	N(m) to N(f)-Standard, Polarity Customizable			
2	Body Material	Copper-Based Ternary Alloy Plating			
Attenuation, Accuracy & Dimension					
Attenuation (dB)	Accuracy(dB)				Dimension (mm/in)
	DC-4GHz	DC-8GHz	DC-12.4GHz	DC-18GHz	
1~10	± 0.4	± 0.5	± 0.6	± 0.7	$\Phi 16.5 \times 58$ [$\Phi 0.65 \times 2.28$]
20	± 0.5	± 0.6	± 0.7	± 0.8	
30	± 0.6	± 0.8	± 0.8	± 1.0	
40	± 0.7	± 0.8	± 0.9	± 1.2	
50	± 0.7	± 0.8	± 1.0	± 1.3	
60	± 0.8	± 0.9	± 1.1	± 1.3	

Note 1: Refer to the power derating curve for details.

Outline Drawing (Units: mm/[inch], Tolerance: $\pm 2\%$)



Ordering Information:

Model: **FSFA5-XX-YY-N**

XX = Frequency Range (4GHz, 8GHz, 12.4GHz, 18GHz)

YY = Attenuation Value in dB

Example: 8GHz, 20 dB→**FSFA5-8-20-N**